



Hemp Oil Distro

contact@hempdistro.com
231-286-9163

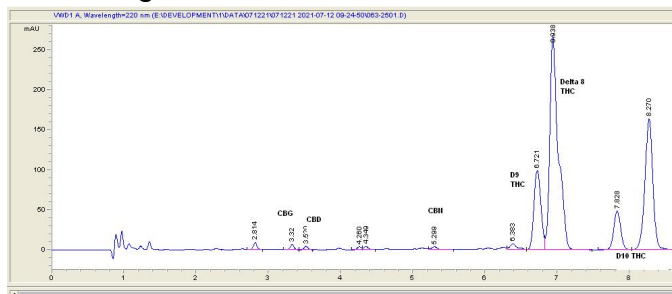
Sample 336-071221-006

D8/D10 Chew Blue Pom
Sample Submitted: 07-12-2021; Report Date: 07-12-2021
nullSample Unit Size: 4.08 g

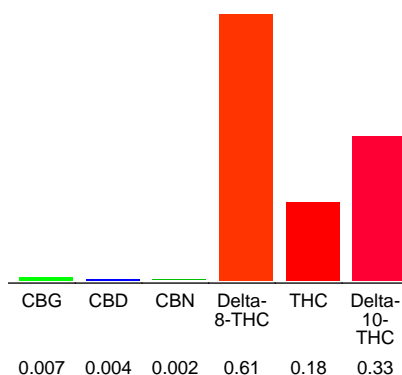
D8/D10 Chew Blue Pom

Edible: Candy

Chromatogram



Cannabinoid Profile



Cannabinoid Profile by HPLC

0.18%
Calculated THC Yield

0.00%
Calculated CBD Yield

1.13%
Total Cannabinoids

Cannabinoid	% wt	mg/unit
CBG	0.007	0.2856
CBD	0.004	0.1632
CBN	0.002	0.0816
Delta-8-THC	0.61	24.89
THC	0.18	7.344
Delta-10-THC	0.33	13.46
Total Cannabinoids	1.13	46.2
Calculated THC Yield	0.18	7.34
Calculated CBD Yield	0.00	0.16

Calculated Maximum THC Yield = THC + 0.877 * THCA
Calculated Maximum CBD Yield = CBD + 0.877 * CBDA

Marin Analytics, LLC
250 Bel Marin Keys Blvd, Suite D4
Novato, CA 94949
415-936-6477 / sarabiancalana1@gmail.com

Sara Biancalana
Sara Biancalana
Chief Scientist

This sample has been tested by Marin Analytics, LLC using valid testing methodologies and a quality system. Values reported relate only to the sample tested. Marin Analytics, LLC makes no claims as to the efficacy, safety or other risks associated with any detected or non-detected levels of any compounds reported herein. This Certificate shall not be reproduced except in full, without the written approval of Marin Analytics, LLC.